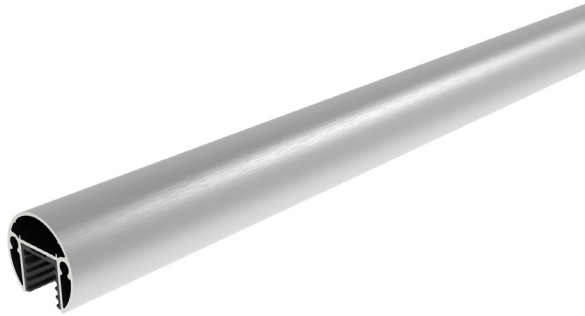


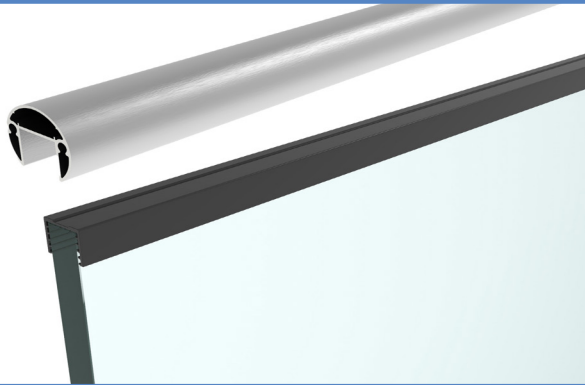
Aluminium Handrail

INSTALLATION GUIDE



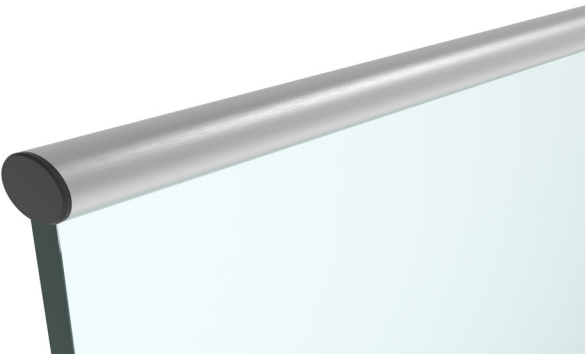
Handrail

The handrail is produced in Aluminium anodised to 25 microns, the diameter is 42.4m. The handrail is available in Silver brushed & black brushed, all corresponding accessories are available in black and grey plastic.



Gasket

To secure the glass to the handrail adequately, we supply a gasket to suit the glass thickness. Please ensure you purchase the correct gasket for the glass thickness. The gasket changes thickness to allow multiple glass sizes to fit within the same size handrail while providing good rigidity.



Installation

Simply push the gasket onto the top of the glass. Next, wipe a small amount of soapy water along the length of gasket. This helps the handrail fitting easier. Now, just slot the handrail on top by pressing firmly down. Insert corners, straight connectors and end caps using a rubber mallet to push each component into position.

Video installation guides are available for the endcap, straight connector, 90 degree corner and adjustable corner on the website.

We recommend periodically cleaning the handrail with non-abrasive cleaning agents and a soft cloth. This will remove any deposits on the handrail without damaging it.

Installation in coastal areas or by swimming pools will need to have increased cleaning. Salt will start to corrode the handrail quicker in these locations, this can be reduced by more regular cleaning.

Should any problems arise or you have any questions please don't hesitate to contact us:

T: +44 (0)1208 261 040

E: sales@pure-vista.com

www.pure-vista.com