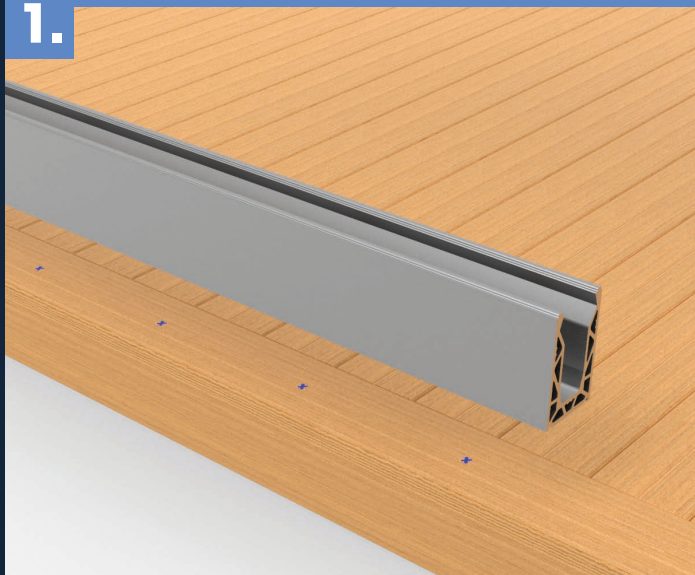




POSI Base Fix With Timber Fixing Plate

INSTALLATION GUIDE

1.



DRILL THE HOLES

The POSI base channel should be placed onto its designated position and the channel fixing holes marked onto the substrate for drilling. Remove the channel before drilling the holes out. Starting with a pilot hole and finally drilling out to 16mm wide and 50-60mm deep, the Timber Fixing Plate will be placed in the hole. Ensure all debris is removed before positioning the Timber Fixing Plate.

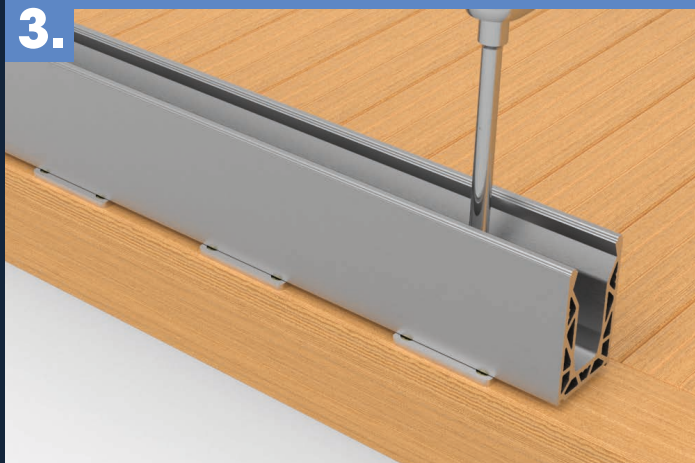
2.



PLACE THE TIMBER PLATE

Insert the Timber Fixing Plate into the drilled holes and line up so it is flush with the wood. Drill pilot holes for the wood screws using the timber plate as a guide. Attach the Timber Fixing Plate using 4 screws per plate. These screws must be 6mm wide and a minimum of 100mm long.

3.



FIT THE CHANNEL

Place the POSI base channel back into position, on top of the Timber Fixing Plates. Ensure all the bolt holes line up correctly before proceeding to fix the channel with M12 bolts. Continue with the POSI and glass installation as normal.

Should any problems arise or you have any questions please don't hesitate to contact us:

T: +44 (0)1208 261 040

F: +44 (0)1208 261 041

E:- sales@pure-vista.com

www.pure-vista.com